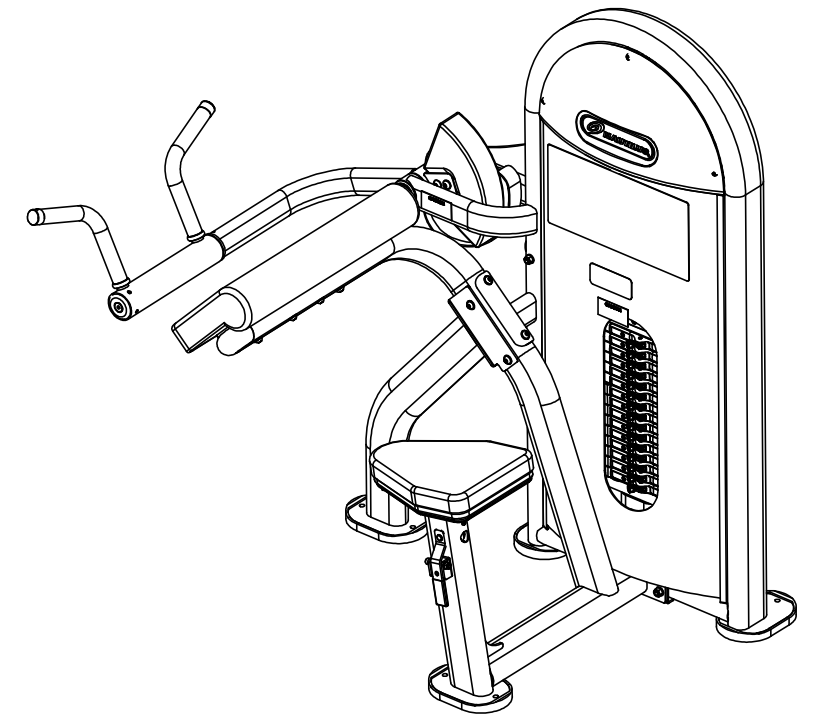
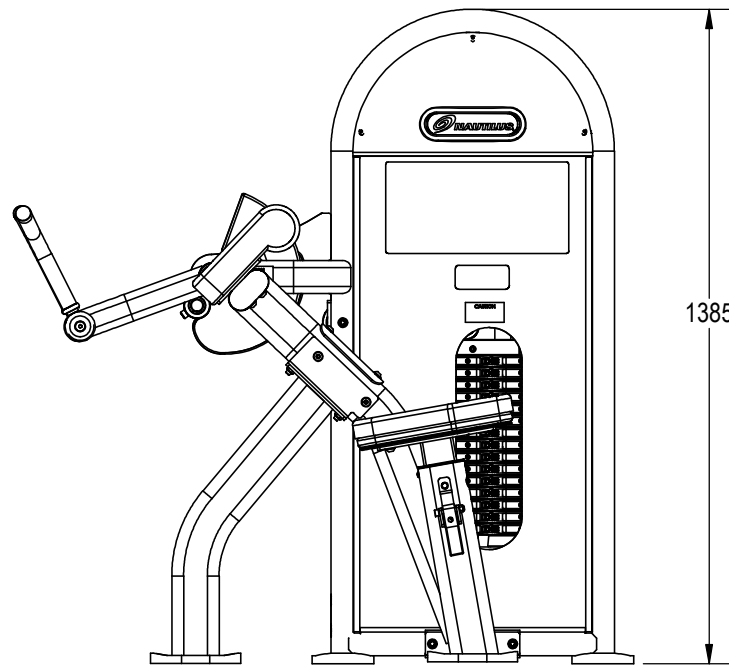
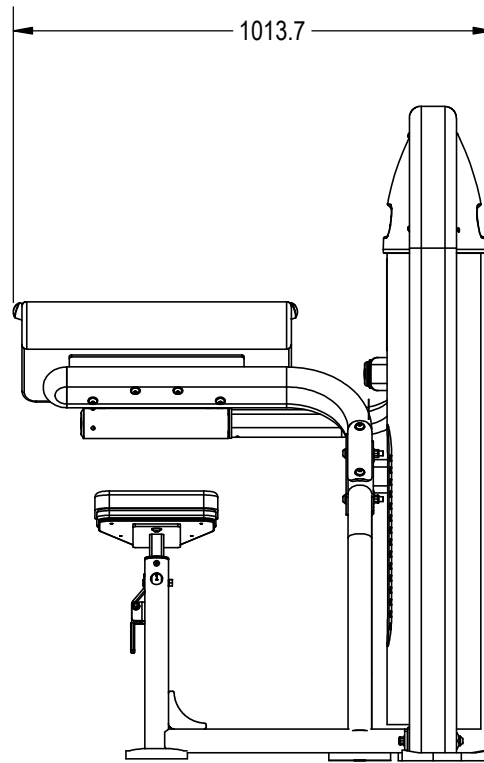
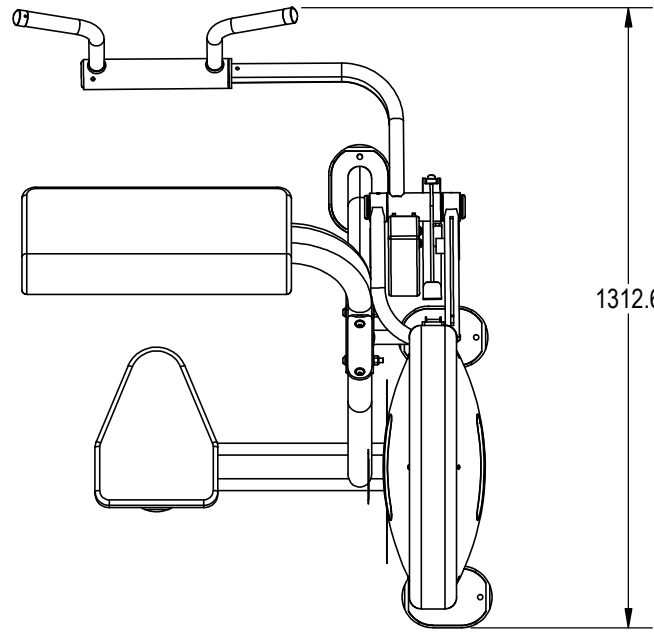


NOTES:

1. ASSEMBLE AND INSPECT PER SOP 620-7918..
2. INSTALL Kg STICKER AND AFFIX Lb STICKER TO INSIDE OF SHROUD WITH TAPE.
3. COLOR DICTATED BY THE SALES ORDER. REFERENCE THE MACHINES BOM FOR COMPONENTS CONTAINING -XX, -00XX AND -XXXXX.
 - a. COLOR: -XX COLOR DESIGNATOR AS SPECIFIED IN SOP 620-8222.
 - b. THE -XX CAN RESULT IN ONE COLOR FOR THE METAL SHROUD AND A DIFFERENT COLOR FOR THE METAL FRAME ALSO WITH A -XX LISTED ON THE BOM.
 - c. THE -00XX IS THE COLOR DESIGNATOR FOR UPHOLSTERY.
 - d. THE 5TH DESIGNATOR: "X" WITHIN -XXXXX DEFINES THE HEAD STRAP OR CUSTOM PRODUCTS BRAND. THIS IS SPECIFIED ON SALES ORDERS.
 - e. THE -XXXXX IS CREATED BY COMBINING THE -XX, -00XX AND THE 5TH DESIGNATOR.
 - f. ALL X'S SHOULD BE DEFINED ON THE SALES ORDER.

REVISIONS HISTORY				
REV.	DATE	DESCRIPTION	ECO	BY
A	8/5/2016	INITIAL RELEASE	15481	AM



DOCUMENT STATUS:

NOTICE OF PROPRIETARY INFORMATION
THIS DOCUMENT SHALL NOT BE REPRODUCED NOR SHALL THE INFORMATION CONTAINED HEREIN BE USED BY OR DISCLOSED TO OTHER EXCEPT AS EXPRESSLY AUTHORIZED BY CORE HEALTH & FITNESS, LLC.

CLASS OF WORK	UNLESS OTHERWISE SPECIFIED DIMS ARE IN mm. TOLERANCES FOR MEASURE OF LENGTH ARE:							ANGLES = ±2°
	0.5 to 3	> 3 to 6	> 6 to 30	> 30 to 120	> 120 to 400	> 400 to 1000	> 1000 to 2000	
FINE	±0.05	±0.05	±0.1	±0.15	±0.2	±0.3	±0.5	----
MEDIUM X	±0.1	±0.1	±0.2	±0.3	±0.5	±0.8	±1.2	±2
COARSE	±0.2	±0.3	±0.5	±0.8	±1.2	±2	±3	±4
VERY COARSE	----	±0.5	±1	±1.5	±2.5	±4	±6	±8

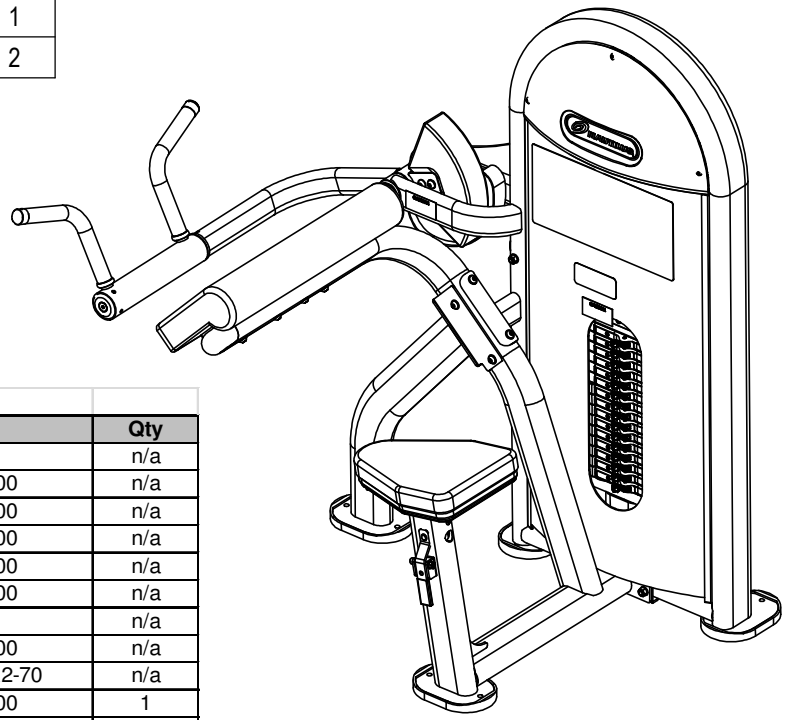
MATERIAL SEE BOM	THIRD ANGLE PROJECTION
FINISH SEE NOTES	CORE HEALTH & FITNESS, LLC 4400 NE 77th Ave., Suite 300 Vancouver, WA 98662
VENDOR: N/A	CORE PART NO NL-S5100-29AGS
P/N: N/A	REV A
	TITLE NL,SSS,BICEP CURL,LNL
	SCALE: 1:10 SHEET 1 OF 3 SHEET SIZE: B

DRAWN	INITIAL AM	DATE 8/4/16
CHECKED		
APPROVED		
	U.O.M.	MM

CORE HEALTH & FITNESS, LLC 4400 NE 77th Ave., Suite 300 Vancouver, WA 98662
CORE PART NO NL-S5100-29AGS
REV A
TITLE NL,SSS,BICEP CURL,LNL
SCALE: 1:10 SHEET 1 OF 3 SHEET SIZE: B

9		8		7		6		5		4		3		2		1	
J		ITEM NO.	PART NUMBER	DESCRIPTION		QTY.		I		ITEM NO.	PART NUMBER	DESCRIPTION		QTY.		H	
J		1	050-5457	Label, S/N, Non-Powered, Primary, Core H&F		1		I		45	730-1109	SCREW,M10X80,BH,SS		6		H	
I		2	730-0194	PAD,SEAT,IN-B7201		1		H		46	730-1110	SCREW,M10X115,BHC,SS		1		G	
H		3	730-0216	PAD,FOOT,FRAME,WELDED		4		G		47	730-1112	SCREW, M10x130, BH, SS		4		F	
G		4	730-0223	CAP, LARGE, FRAME		1		F		48	730-1118	SCREW, M10, BHC, HK, SS		4		E	
F		5	730-0232	PAD,ARM REST,IN-S5100		1		E		49	730-1122	SCREW,M10X63,BHC,SS		4		D	
E		6	730-0233	SHROUD,REAR,IN-S5100		1		D		50	730-1138	SCREW,M8X20,BHC,SS		6		C	
D		7	730-0236	PIN, BELT ANCHOR		2		C		51	730-1155	SCREW, 10-32X3.2, SET		4		B	
C		8	730-0237	SCREW, M10x30, SHS,SS		2		B		52	730-1335	SHROUD,LNL,S5100		1		A	
B		9	730-0385	LABEL,CAUTION,PINCH POINT		3		A		53	730-1399	WSA-LNL,180LB,15H		1			
A		10	730-0548	COUNTERBALANCE, IN-S5110		1				54	730-1448	BUMPER, STACK, 25.4MM		2			
		11	730-0565	CAP, END, HANDLE		2				55	730-1491	LABEL,INSTRUCTIONS,LOCK N LOAD		1			
		12	730-0656	CAP,50MM OD		2				56	730-1544	WASHER, BICEP/TRICEP, KEYED, LOCK, 7.2MM THICK		1			
		13	730-0702	SHROUD,UPPER		2				57	730-1545	WASHER, BICP/TRICEP, KEYED, FLAT, 7.2MM THICK		1			
		14	730-0704	CAP, 25MM, ALUMINUM		2				58	730-7231-XXX	STICKER, PLACARD, INSTRUCTION, LLBC, NAUT.		1			
		15	730-0721	PULLEY, 75MM		3				59	731-0335	STICKER, MADE IN CHINA, IP		1			
		16	730-0778	BELT		1				60	731-7311	STICKER,NAUTILUS,DECO,45MMX191MM		2			
		17	730-0845	SHROUD,MOUNTING,U-STYLE,CLIP		6											
		18	730-0858	BUSHING, 1.0, BRONZE		2											
		19	730-0870	SCREW,M10X25,FHM,HK,SS		3											
		20	730-0885	NUT,M6,JAM,HEX,SS		2											
		21	730-0886	BALL BEARING,25MM ID, 47MM OD		2											
		22	730-0892	SCREW,M8X55,SHS,SS		1											
		23	730-0896	SCREW,M8X16,SET,SS		4											
		24	730-0899	SCREW,M6X12,BHC,SS		2											
		25	730-0907	WASHER,M10,SPLIT,LOCK,SS		2											
		26	730-0908	WASHER,M10,FLAT,SS		30											
		27	730-0910	WASHER,M8,BELLEVILLE,SS		8											
		28	730-0911	ADJUSTMENT,HANDLE,COMPRESSION SPING		1											
		29	730-0930	ASSY,EXTENSION,ADJUSTMENT,HANDLE		1											
		30	730-0935	ASSY,ADJUSTMENT,HANDLE,END,SLEEVE		1											
		31	730-0936	ASSY,TUBE,INSERT,SLEEVE		2											
		32	730-1075	WEIGHT STACK,FRAME		1											
		33	730-1076	LEVERAGE ARM,IN-S5100		1											
		34	730-1077	ASSY,PIVOT,HANDLE,IN-S5100		1											
		35	730-1078	WEIGHT STACK,GUIDE RAIL		2											
		36	730-1079	RUBBER,PAD,,HANDLE,GRIP,SLEEVE		2											
		37	730-1081	ASSY,MAIN FRAME		1											
		38	730-1082	ASSY,MAIN FRAME,LEG		1											
		39	730-1083	POST,ADJUSTMENT,EXTENSION,SEAT		1											
		40	730-1084	SHAFT, 25MM X 192		1											
		41	730-1085	CAP, END TUBE, S5110		1											
		42	730-1087	PAD,RUBBER,BUMPER,M47X68		1											
		43	730-1103	NUT,M8,NYLON PATCH,SS		1											
		44	730-1104	NUT,M10,NYLON PATCH,SS		11											

REPLACEMENTS PARTS				
Item	Star Trac P/N	Description	Inray P/N	Qty
3	730-0223	CAP,LARGE, FRAME	L1-5000	n/a
37	730-1079	RUBBER,PAD,HANDLE,GRIP,SLEEVE	IN-S51000700	n/a
2	730-0216	PAD,FOOT,FRAME,WELDED	IN-B75030900	n/a
1	730-0194	PAD,SEAT, IN-B7201	IN-B72012000	n/a
4	730-0232	PAD,ARM REST,IN-S5100	IN-S51102600	n/a
5	730-0233	SHROUD,REAR, IN-S5100	IN-S10121500	n/a
53	730-1335	SHROUD,LNL,S5100	730-1335	n/a
6	730-0236	PIN,BELT ANCHOR	IN-S10121700	n/a
			GB70M10*30A2-70	n/a
42	730-0159	KIT, ENDCAP, S5100	IN-S51102200	1
			CNLM10*25A2-70	3
			IN-S51000300	1
			GB6005-2Z	1
			IN-S51102300	1
			IN-S10121700	1
	730-0160	KIT, COUNTBALANCE, S5100	PNLM10*63A2-70	2
			GB70M10*30A2-70	1
			NM10A2-70	2
11			GB9510A2-70	3
			IN-D10132800	1
14	730-0228	KIT, UPPER SHROUD	PNLM8*20A2-70	3
			GB958A2-70	3
			IN-S51101000	2
	730-0229	KIT, PULLEY REPLACEMENT, IN-S5100	PNLM10*63A2-70	2
			NM10A2-70	2
16			GB9510A2-70	4
N/A	730-0188	KIT, HARDWARE, IN-R8003	N/A	N/A
			IN-S21002800	15.5FT
			IN-S10121700	2
17	730-0215	KIT,BELT REPLACEMENT	GB70M10-30A2-70	1

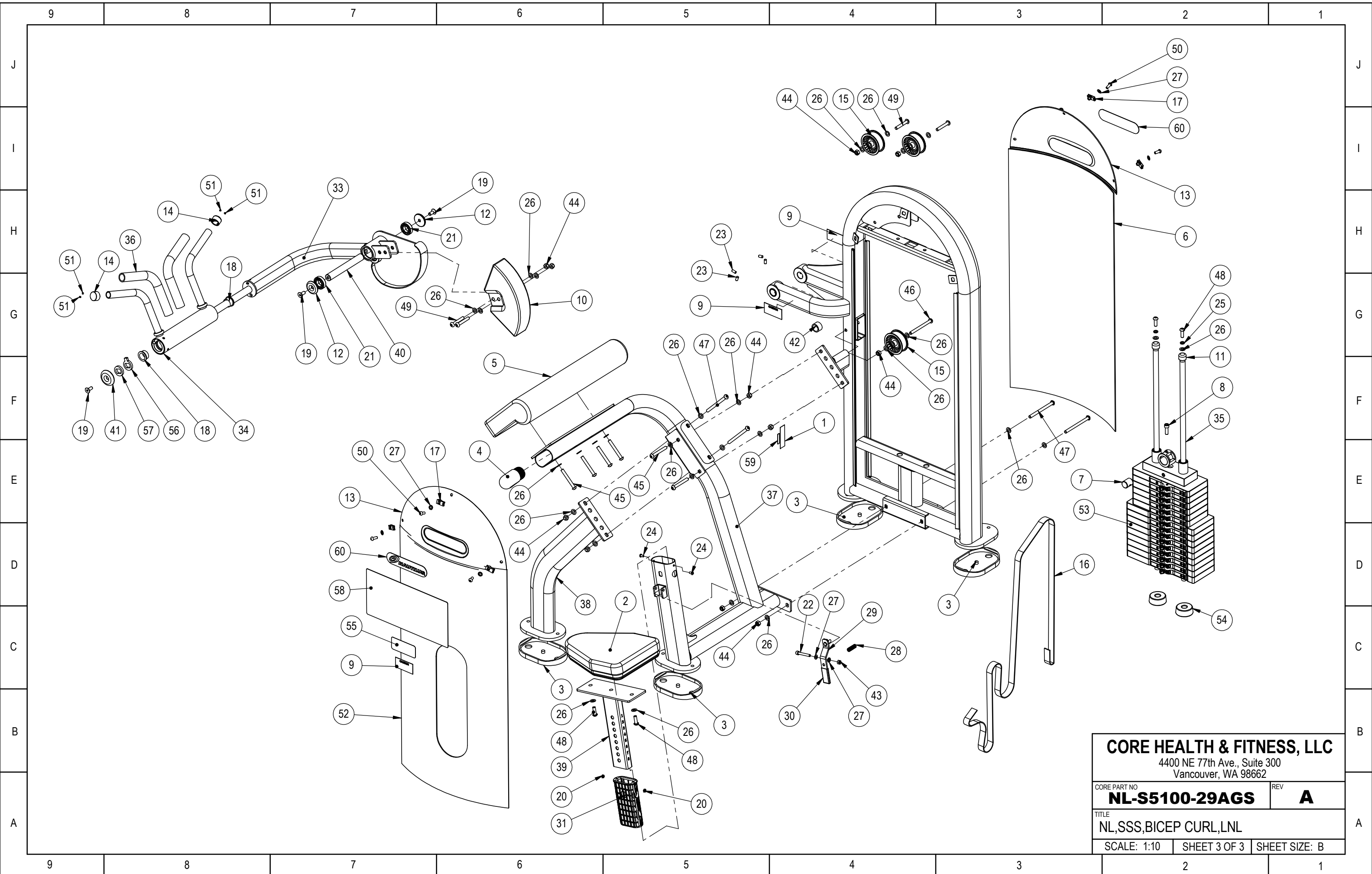


CORE HEALTH & FITNESS, LLC
 4400 NE 77th Ave., Suite 300
 Vancouver, WA 98662

CORE PART NO: **NL-S5100-29AGS** REV: **A**

TITLE: **NL,SSS,BICEP CURL,LNL**

SCALE: 1:10 | SHEET 2 OF 3 | SHEET SIZE: B



CORE HEALTH & FITNESS, LLC
 4400 NE 77th Ave., Suite 300
 Vancouver, WA 98662

CORE PART NO
NL-S5100-29AGS REV **A**

TITLE
NL,SSS,BICEP CURL,LNL

SCALE: 1:10 SHEET 3 OF 3 SHEET SIZE: B